



شركة الاستثمار الوطنية
NATIONAL INVESTMENTS COMPANY

Bursa Kuwait – Daily Market Report MENA Securities – Research & Studies Dep.

13th November 2022



www.nic.com.kw

DAILY MARKET COVERAGE REPORT

NIC MENA SECURITIES - RESEARCH AND STUDIES DEP



Kuwait Market Watch

Sunday, November 13, 2022

Index	Close	DTD Chg Net	DTD (%)	YTD (%)	52W High	52W Low	MKT CAP Bn (KD)	PBV (X)	PE (X)	DY (%)
All Share Index	7,623.04	81.23	1.08%	8.23%	8,472.15	6,788.83	45.34	1.99	36.42	3.95
Premier Index	8,557.71	97.27	1.15%	12.03%	9,437.37	7,343.90	35.89	2.19	33.84	4.37
Main Index	5,647.28	43.47	0.78%	-4.06%	6,600.62	5,190.37	9.45	1.20	46.22	2.37
NIC 50 Index	9,609.86	121.13	1.28%	12.76%	10,553.82	8,195.69	35.19	2.19	33.84	4.37

Index	Value Mn(KD)	Volume (Mn share)
All Share Index	84.51	416.56
Premier Index	58.63	149.55
Main Index	25.89	267.01
NIC 50 Index	82.77	336.80

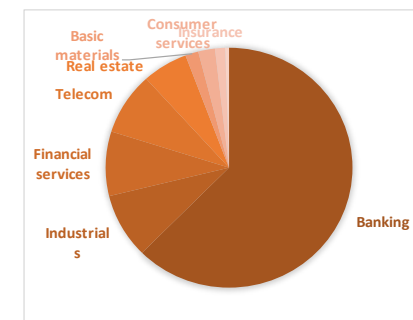
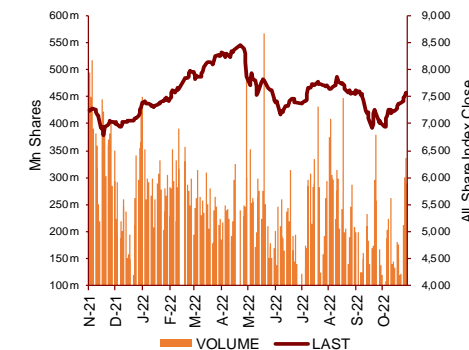
Market Breadth	UP	Down	No Chg
All Share Index	92	25	37
Premier Index	20	3	3
Main Index	73	22	34
NIC 50 Index	42	5	3

Today's Top 5 Gainer %	Close KD	Value KD	DTD (%)
Kuwait Remal Real Estate	0.010	22,721	14.46%
Kuwait Real Estate Holding	0.034	7,616	8.68%
Mashaer Holding	0.059	417	8.26%
Inovent BSC Public	0.094	405,110	7.18%
Coast Investment and Developme	0.084	55,532	7.14%

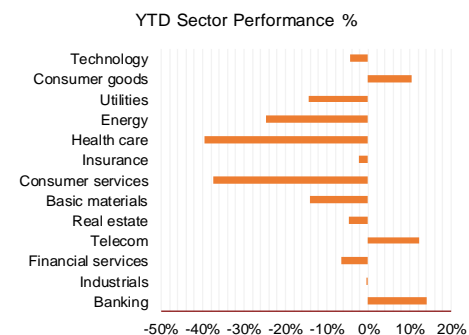
Today's Top 5 Loser %	Close KD	Value KD	DTD (%)
Advanced Technology	0.409	2	-18.04%
United Projects for Aviation	0.200	874	-8.26%
Al Madar Investment	0.090	2,238	-6.80%
Salbookh Trading	0.016	7,615	-5.78%
Energy House Holding	0.021	8,498	-5.41%

Today's Top 5 by Value	Close KD	Trade Val Mn(KD)	DTD (%)
Kuwait Finance House	0.870	25.79	2.59%
Aayan Leasing and Investment	0.143	5.31	3.62%
National Industries Group Hold	0.249	5.18	5.06%
Agility Public Warehousing	0.808	4.52	0.62%
Kuwait Real Estate	0.112	3.94	3.70%

Top 5 by Volume	Close KD	Trade Vol Mn(Shrs)	DTD (%)
Asiya Capital Investments	0.058	41.61	2.31%
Aayan Leasing and Investm	0.143	36.97	3.62%
GFH Financial Group	0.082	35.64	1.36%
Kuwait Real Estate	0.112	35.48	3.70%
Kuwait Finance House	0.870	29.70	2.59%



Sector	Close	DTD Chg Net	DTD (%)	YTD (%)	52W High	52W Low	MKT CAP Bn (KD)	PBV (X)	PE (X)	DY (%)
Banking	1,873.13	22.560	1.22%	14.0%	1,992.2	1,557.8	27.944	1.68	25.53	1.81
Industrials	1,145.70	8.850	0.78%	-0.4%	1,443.6	976.3	3.912	1.01	27.20	3.84
Financial services	1,351.20	20.700	1.56%	-6.5%	1,678.3	1,190.4	3.885	1.04	86.32	2.81
Telecom	1,231.04	8.620	0.71%	12.2%	1,514.7	1,055.9	3.767	1.35	13.43	2.79
Real estate	1,279.01	14.510	1.15%	-4.7%	1,438.0	1,155.8	2.671	0.70	29.70	1.31
Basic materials	881.57	2.400	0.27%	-14.2%	1,233.3	800.8	0.768	1.23	9.17	6.13
Consumer services	447.83	-10.320	-2.25%	-37.3%	776.8	445.4	0.981	2.22	29.77	2.10
Insurance	1,489.86	-8.810	-0.59%	-2.3%	1,675.7	1,434.5	0.594	0.89	44.81	5.37
Health care	454.28	-27.240	-5.66%	-39.6%	821.7	420.4	0.225	15.79	13.02	1.00
Energy	1,088.00	12.910	1.20%	-24.7%	1,584.1	975.7	0.220	0.81	19.94	2.25
Utilities	521.05	7.890	1.54%	-14.5%	647.4	494.7	0.218	1.81	16.04	9.23
Consumer goods	1,486.17	11.150	0.76%	10.4%	1,641.0	1,208.7	0.136	0.93	36.78	2.19
Technology	661.30	8.010	1.23%	-4.5%	800.3	539.1	0.009	0.80	NM	-
	7,623.04	81.23	1.08%	8.2%	8,472.2	6,788.8	45.34	1.99	36.42	3.95



DAILY MARKET COVERAGE REPORT

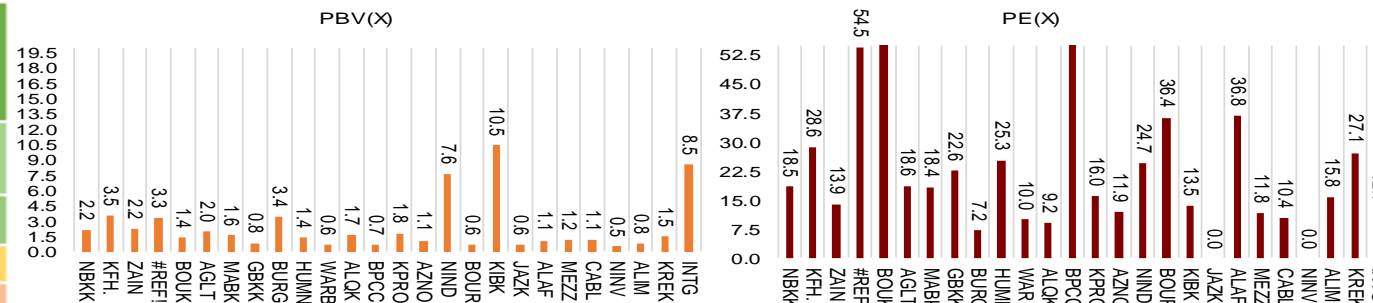
NIC MENA SECURITIES - RESEARCH AND STUDIES DEP



Premier Market

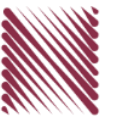
Sunday, November 13, 2022

Premier Market	Price			Valuation Multiples			MKT Cap	Price Performance		Trading Indicators		ROE	ROA	52 Week (KD)		MKT Cap
	Close (KD)	Day Δ	Day % Δ	PBV(X)	PE(X)	DY%	Mn KD	MTD(%)	YTD (%)	Value (Mn KD)	(Mn Shrs)	(%)	(%)	High	Low	%
National Bank of Kuwait	1.126	0.006	0.54%	2.15	18.46	2.17	8,504	4%	18%	2.52	2.24	11.7%	1.5%	1.143	0.903	23.70%
Kuwait Finance House	0.870	0.022	2.59%	3.50	28.61	1.29	11,511	7%	12%	25.79	29.70	12.4%	1.6%	1.039	0.720	32.08%
Mobile Telecommunications	0.608	0.002	0.33%	2.18	13.94	5.45	2,631	2%	2%	2.26	3.71	15.7%	4.3%	0.698	0.564	7.33%
Boubyan Bank	0.842	0.004	0.48%	3.32	54.52	0.54	3,148	2%	18%	0.90	1.07	6.8%	0.8%	0.965	0.681	8.77%
Agility Public Warehousing	0.808	0.005	0.62%	1.37	61.67	2.08	2,041	3%	2%	4.52	5.57	2.7%	2.2%	1.062	0.634	5.69%
Mabane Co.	0.901	0.003	0.33%	1.98	18.58	1.47	1,119	3%	20%	0.24	0.27	11.1%	5.5%	0.910	0.717	3.12%
Gulf Bank	0.350	0.000	0.00%	1.59	18.37	1.90	1,120	2%	32%	1.76	5.00	8.9%	0.9%	0.385	0.230	3.12%
Burgan Bank	0.229	0.002	0.88%	0.82	22.56	2.10	752	5%	-5%	0.53	2.31	3.8%	0.7%	0.307	0.205	2.09%
Human Soft Holding	3.416	-0.006	-0.18%	3.44	7.21	11.69	416	2%	6%	0.39	0.12	49.6%	34.9%	3.704	3.006	1.16%
Warba Bank	0.253	0.002	0.80%	1.38	25.33	0.00	506	5%	-8%	1.41	5.53	5.8%	0.6%	0.298	0.216	1.41%
Qurain Petrochemical Industries	0.261	0.000	0.00%	0.64	9.98	6.90	280	4%	-25%	0.79	3.02	6.4%	5.2%	0.403	0.210	0.78%
Boubyan Petrochemical	0.820	0.004	0.49%	1.67	9.23	7.35	428	3%	-4%	0.27	0.33	19.1%	10.1%	1.125	0.769	1.19%
Kuwait Projects Company Holding	0.128	0.002	1.59%	0.67	323.08	3.97	313	8%	-11%	0.45	3.49	0.2%	0.1%	0.215	0.112	0.87%
Shamal Az-Zour Al-Oula Power & Water	0.198	0.003	1.54%	1.81	16.04	9.23	218	3%	-14%	0.20	1.01	14.8%	2.7%	0.246	0.188	0.61%
National Industries Group Holding	0.249	0.012	5.06%	1.05	11.94	4.69	536	6%	-2%	5.18	20.93	5.3%	2.9%	0.314	0.207	1.49%
Boursa Kuwait Securities Co	2.370	-0.003	-0.13%	7.61	24.69	2.74	476	4%	17%	0.32	0.13	32.4%	22.9%	2.870	1.800	1.33%
Kuwait International Bank	0.206	0.004	1.98%	0.64	36.40	1.90	218	9%	-4%	1.22	5.93	1.7%	0.3%	0.259	0.186	0.61%
Jazeera Airways	1.780	0.010	0.56%	10.46	13.51	2.60	392	7%	37%	0.38	0.21	92.1%	11.6%	2.099	0.981	1.09%
Alafco Aviation Lease and Finance	0.171	0.003	1.79%	0.62	NM	0.00	163	2%	-23%	1.26	7.36	-15.9%	-3.4%	0.256	0.162	0.45%
Mezzan Holding	0.353	-0.006	-1.67%	1.05	36.78	4.37	110	-2%	-38%	0.44	1.26	-7.2%	-2.8%	0.612	0.352	0.31%
Gulf Cable and Electrical Industries	1.312	0.038	2.98%	1.18	11.81	4.71	273	9%	46%	0.52	0.40	11.0%	NM	1.850	0.860	0.76%
National Investments	0.277	0.000	0.00%	1.10	10.36	16.25	221	16%	26%	0.60	2.16	5.4%	4.4%	0.475	0.201	0.62%
Alimtia Investment Group	0.085	0.001	0.83%	0.50	NM	10.73	87	13%	-29%	0.71	8.43	-0.9%	-0.4%	0.138	0.069	0.24%
Kuwait Real Estate	0.112	0.004	3.70%	0.79	15.79	2.70	104	2%	-38%	3.94	35.48	4.9%	1.9%	0.187	0.097	0.29%
Integrated Holding	0.370	0.015	4.23%	1.47	27.14	2.82	94	13%	-4%	0.98	2.69	5.4%	3.4%	0.478	0.321	0.26%
ALI ALGanim	0.844	0.004	0.48%	8.51	12.09	5.66	231	6%	nm	1.02	1.22	30.5%	12.1%	0.966	0.750	0.64%
Total		97.27	1.15%	2.19	33.84	4.37	35,889	4.5%	12.0%	58.63	148.34					100%



DAILY MARKET COVERAGE REPORT

NIC MENA SECURITIES - RESEARCH AND STUDIES DEP



Premier Market Company	Price			Valuation Multiples			MKT Cap Mn KD	Price Performance		ROE (%)	ROA (%)
	Close (kD)	Day Δ	Day % Δ	PBV(X)	PE(X)	DY%		MTD(%)	YTD (%)		
National Bank of Kuwait	1.126	0.006	0.54%	2.15	18.5	2.17	8,504	4.5%	18.0%	11.7%	1.5%
Kuwait Finance House	0.870	0.022	2.59%	3.50	28.6	1.29	11,511	7.4%	12.1%	12.4%	1.6%
Mobile Telecommunications	0.608	0.002	0.33%	2.18	13.9	5.45	2,631	1.5%	1.8%	15.7%	4.3%
Boubyan Bank	0.842	0.004	0.48%	3.32	54.5	0.54	3,148	2.2%	17.6%	6.8%	0.8%
Agility Public Warehousing	0.808	0.005	0.62%	1.37	61.7	2.08	2,041	3.1%	2.0%	2.7%	2.2%
Mabaneer Co.	0.901	0.003	0.33%	1.98	18.6	1.47	1,119	3.3%	20.0%	11.1%	5.5%
Gulf Bank	0.350	0.000	0.00%	1.59	18.4	1.90	1,120	2.0%	31.7%	8.9%	0.9%
Burgan Bank	0.229	0.002	0.88%	0.82	22.6	2.10	752	5.0%	-5.0%	3.8%	0.7%
Human Soft Holding	3.416	-0.006	-0.18%	3.44	7.2	11.69	416	1.6%	6.1%	49.6%	34.9%
Warba Bank	0.253	0.002	0.80%	1.38	25.3	0.00	506	5.0%	-8.4%	5.8%	0.6%
Qurain Petrochemical Industries	0.261	0.000	0.00%	0.64	10.0	6.90	280	3.6%	-24.8%	6.4%	5.2%
Boubyan Petrochemical	0.820	0.004	0.49%	1.67	9.2	7.35	428	2.9%	-4.2%	19.1%	10.1%
Kuwait Projects Company Holding	0.128	0.002	1.59%	0.67	323.1	3.97	313	8.5%	-11.3%	0.2%	0.1%
Shamal Az-Zour Al-Oula Power & Water	0.198	0.003	1.54%	1.81	16.0	9.23	218	2.6%	-14.5%	14.8%	2.7%
National Industries Group Holding	0.249	0.012	5.06%	1.05	11.9	4.69	536	6.4%	-1.6%	5.3%	2.9%
Boursa Kuwait Securities Co	2.370	-0.003	-0.13%	7.61	24.7	2.74	476	4.3%	17.5%	32.4%	22.9%
Kuwait International Bank	0.206	0.004	1.98%	0.64	36.4	1.90	218	9.0%	-3.6%	1.7%	0.3%
Jazeera Airways	1.780	0.010	0.56%	10.46	13.5	2.60	392	6.5%	37.2%	92.1%	11.6%
Alafco Aviation Lease and Finance	0.171	0.003	1.79%	0.62	NM	0.00	163	1.8%	-22.9%	-15.9%	-3.4%
Mezzan Holding	0.353	-0.006	-1.67%	1.05	36.8	4.37	110	-2.5%	-37.8%	-7.2%	-2.8%
Gulf Cable and Electrical Industries	1.312	0.038	2.98%	1.18	11.8	4.71	273	8.9%	46.3%	11.0%	9.0%
National Investments	0.277	0.000	0.00%	1.10	10.4	16.25	221	15.9%	26.5%	5.4%	4.4%
Alimtiq Investment Group	0.085	0.001	0.83%	0.50	NM	10.73	87	13.4%	-28.9%	-0.9%	-0.4%
Kuwait Real Estate	0.112	0.004	3.70%	0.79	15.8	2.70	104	1.8%	-37.9%	4.9%	1.9%
Integrated Holding	0.370	0.015	4.23%	1.47	27.1	2.82	94	13.5%	-4.1%	5.4%	3.4%
ALI ALGanim	0.844	0.004	0.48%	4.21	12.1	5.66	231	6.2%	nm	30.5%	12.1%
Total	97.27	1.15%	2.19	33.84	4.37	35,658	4.5%	12.0%			

Discription	Close (kD)	Day Δ	Day % Δ	50 Day	200 Day	14 Day	Mn KD	MTD(%)	YTD (%)	High	Low
Premier Index	8,558	97.27	1.15%	8,205	8,467	75	35,658	4.5%	12.0%	9,437	7,344

Top 5 Performrs (Today's Price Change)

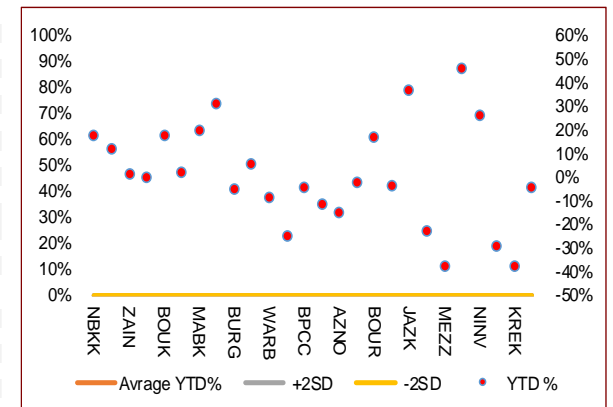
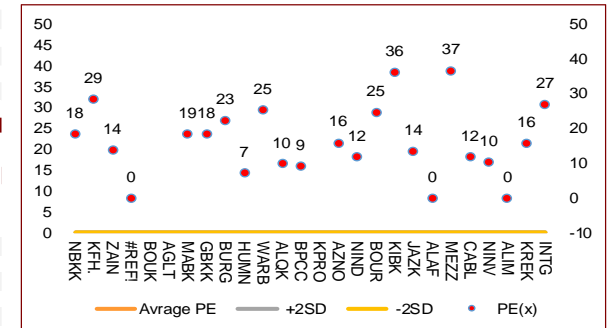
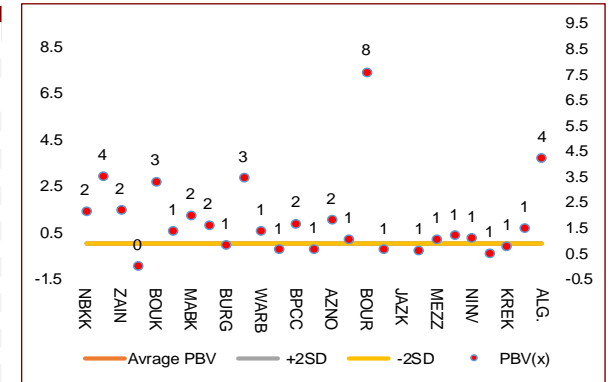
National Industries Group Holding	0.249	0.012	5.06%	0.242	0.258	58	536	6.4%	-1.6%	0.314	0.207
Integrated Holding	0.370	0.015	4.23%	0.365	0.397	56	94	13.5%	-4.1%	0.478	0.321
Kuwait Real Estate	0.112	0.004	3.70%	0.110	0.142	43	104	1.8%	-37.9%	0.187	0.097
Gulf Cable and Electrical Industries	1.312	0.038	2.98%	1.219	1.344	91	273	8.9%	46.3%	1.850	0.860
Kuwait Finance House	0.870	0.022	2.59%	0.840	0.876	67	11,511	7.4%	12.1%	1.039	0.720

Middel Performrs (Today's Price Change)

Kuwait International Bank	0.206	0.004	1.98%	0.200	0.218	74	218	9.0%	-3.6%	0.259	0.186
Alafco Aviation Lease and Finance	0.171	0.003	1.79%	0.178	0.201	37	163	1.8%	-22.9%	0.256	0.162
Kuwait Projects Company Holding	0.128	0.002	1.59%	0.133	0.161	70	313	8.5%	-11.3%	0.215	0.112
Shamal Az-Zour Al-Oula Power & Water	0.198	0.003	1.54%	0.196	0.210	69	218	2.6%	-14.5%	0.246	0.188
Burgan Bank	0.229	0.002	0.88%	0.227	0.252	71	752	5.0%	-5.0%	0.307	0.205
Alimtiq Investment Group	0.085	0.001	0.83%	0.081	0.105	75	87	13.4%	-28.9%	0.138	0.069
Warba Bank	0.253	0.002	0.80%	0.238	0.259	75	506	5.0%	-8.4%	0.298	0.216
Agility Public Warehousing	0.808	0.005	0.62%	0.752	0.855	70	2,041	3.1%	2.0%	1.062	0.634
National Bank of Kuwait	1.126	0.006	0.54%	1.043	1.042	76	8,504	4.5%	18.0%	1.143	0.903
Boubyan Petrochemical	0.820	0.004	0.49%	0.100	0.100	48	428	2.9%	-4.2%	1.210	0.996
Boubyan Bank	0.842	0.004	0.48%	0.809	0.811	74	3,148	2.2%	17.6%	0.965	0.681
Mabaneer Co.	0.901	0.003	0.33%	0.864	0.820	61	1,119	3.3%	20.0%	0.910	0.717
Ahli United Bank BSC	#N/A	#N/A	#N/A	0.305	0.289	50	#N/A	#N/A	#N/A	0.336	0.240
Gulf Bank	0.350	0.000	0.00%	0.331	0.324	65	1,120	2.0%	31.7%	0.385	0.230

Bottom 5 Performrs (Today's Price Change)

Qurain Petrochemical Industries	0.261	0.000	0.00%	0.274	0.338	64	280	3.6%	-24.8%	0.403	0.210
National Investments	0.277	0.000	0.00%	0.255	0.315	84	221	15.9%	26.5%	0.475	0.201
Boursa Kuwait Securities Co	2.370	-0.003	-0.13%	2.239	2.383	56	476	4.3%	17.5%	2.870	1.800
Human Soft Holding	3.416	-0.006	-0.18%	3.336	3.324	75	416	1.6%	6.1%	3.704	3.006
Mezzan Holding	0.353	-0.006	-1.67%	0.383	0.482	48	110	-2.5%	-37.8%	0.612	0.352



DAILY MARKET COVERAGE REPORT

NIC MENA SECURITIES - RESEARCH AND STUDIES DEP



Banking Sector		Price			Valuation Multiples			MKT Cap	Price Performance		Trading Indicators		ROE	ROA	52 Week (KD)		MKT Cap
Company	Close (KD)	Day Δ	Day % Δ	PBV(X)	PE(X)	DY%	Mn KD	MTD(%)	YTD (%)	Value (Mn KD)	(Mn Shrs)	(%)	(%)	High	Low	%	
National Bank of Kuwait	1.126	0.006	0.54%	2.15	18.46	2.17	8,504	4.5%	18.0%	2.52	2.24	11.7%	1.5%	1.143	0.903	18.76%	
Kuwait Finance House	0.870	0.022	2.59%	3.50	28.61	1.29	11,511	7.4%	12.1%	25.79	29.70	12.4%	1.6%	1.039	0.720	25.39%	
Boubyan Bank	0.842	0.004	0.48%	3.32	54.52	0.54	3,148	2.2%	17.6%	0.90	1.07	6.8%	0.8%	0.965	0.681	6.94%	
Commercial Bank of Kuwait	0.480	0.000	0.00%	1.14	11.96	4.17	951	-1.2%	-4.2%	0.00	0.00	9.9%	1.9%	0.549	0.456	2.10%	
Gulf Bank	0.350	0.000	0.00%	1.59	18.37	1.90	1,120	2.0%	31.7%	1.76	5.00	8.9%	0.9%	0.385	0.230	2.47%	
Burgan Bank	0.229	0.002	0.88%	0.82	22.56	2.10	752	5.0%	-5.0%	0.53	2.31	3.8%	0.7%	0.307	0.205	1.66%	
Ahli United Bank	0.287	0.005	1.77%	0.96	24.87	1.69	646	7.5%	-4.2%	0.56	1.96	3.8%	0.8%	0.324	0.250	1.43%	
Warba Bank	0.253	0.002	0.80%	1.38	25.33	0.00	506	5.0%	-8.4%	1.41	5.53	5.8%	0.6%	0.298	0.216	1.12%	
Al Ahli Bank of Kuwait	0.332	0.000	0.00%	0.98	21.81	1.43	588	0.3%	37.2%	0.58	1.73	4.5%	0.6%	0.355	0.216	1.30%	
Kuwait International Bank	0.206	0.004	1.98%	0.64	36.40	1.90	218	9.0%	-3.6%	1.22	5.93	1.7%	0.3%	0.259	0.186	0.48%	
Total Banking Sector - 10 Companies							27,944			35.27	55.46					61.64%	
Basic Materials		Price			Valuation Multiples			MKT Cap	Price Performance		Trading Indicators		ROE	ROA	52 Week (KD)		MKT Cap
Company	Close (KD)	Day Δ	Day % Δ	PBV(X)	PE(X)	DY%	Mn KD	MTD(%)	YTD (%)	Value (Mn KD)	(Mn Shrs)	(%)	(%)	High	Low	%	
Qurain Petrochemical Industries	0.261	0.000	0.00%	0.64	9.98	6.90	280	3.57%	-24.78%	0.79	3.02	6.4%	5.2%	0.403	0.210	0.62%	
Boubyan Petrochemical	0.820	0.004	0.49%	1.67	9.23	7.35	428	2.89%	-4.23%	0.27	0.33	19.1%	10.1%	1.125	0.769	0.94%	
Al Kout Industrial Projects	0.390	0.000	0.00%	1.40	4.93	10.26	39	0.00%	-21.37%	0.00	0.00	30.5%	20.1%	0.545	0.390	0.09%	
Kuwait Foundry	0.294	0.000	0.00%	1.22	12.53	0.00	21	1.38%	-20.33%	0.00	0.00	10.7%	10.3%	0.424	0.260	0.05%	
Total Basic Materials - 4 Companies							768			1.06	3.35					1.70%	
Consumer Goods		Price			Valuation Multiples			MKT Cap	Price Performance		Trading Indicators		ROE	ROA	52 Week (KD)		MKT Cap
Company	Close (KD)	Day Δ	Day % Δ	PBV(X)	PE(X)	DY%	Mn KD	MTD(%)	YTD (%)	Value (Mn KD)	(Mn Shrs)	(%)	(%)	High	Low	%	
Mezzan Holding	0.353	-0.006	-1.67%	1.05	36.78	4.37	110	-2.5%	-37.8%	0.44	1.26	-7.2%	-2.8%	0.612	0.352	0.24%	
Livestock Transport and Trading	0.123	-0.006	-4.65%	0.80	NM	0.00	26	2.5%	-29.1%	0.00	0.02	-14.5%	-8.2%	0.196	0.112	0.06%	
Total Consumer Goods - 2 Companies							136			0.45	1.28					0.30%	
Consumer Services		Price			Valuation Multiples			MKT Cap	Price Performance		Trading Indicators		ROE	ROA	52 Week (KD)		MKT Cap
Company	Close (KD)	Day Δ	Day % Δ	PBV(X)	PE(X)	DY%	Mn KD	MTD(%)	YTD (%)	Value (Mn KD)	(Mn Shrs)	(%)	(%)	High	Low	%	
Jazeera Airways	1.780	0.010	0.56%	10.46	13.51	2.60	392	6.5%	37.2%	0.38	0.21	92.1%	11.6%	2.099	0.981	0.86%	
Kuwait National Cinema	1.010	0.020	2.02%	1.21	9.64	3.03	94	11.2%	12.2%	0.00	0.00	13.3%	6.1%	1.000	0.850	0.21%	
Oula Fuel Marketing	0.150	0.000	0.00%	0.93	16.18	3.33	61	3.4%	-3.8%	0.00	0.02	5.6%	2.9%	0.170	0.140	0.13%	
Al Soor Fuel Marketing	0.154	0.000	0.00%	0.91	19.64	3.25	62	3.4%	-0.6%	0.00	0.01	4.8%	3.6%	0.168	0.142	0.14%	
Sultan Center Food Products	0.115	0.002	1.77%	0.65	0.90	0.00	32	3.6%	-46.2%	0.00	0.04	74.2%	12.2%	0.269	0.103	0.07%	
Jiyad Holding	0.028	0.001	5.30%	0.30	NM	0.00	5	26.9%	-67.3%	0.30	10.89	-16.2%	-10.9%	0.095	0.015	0.01%	
IFA Hotels and Resorts	0.031	0.001	4.73%	3.90	197.33	0.00	20	14.8%	-44.7%	0.12	3.85	2.0%	0.4%	0.073	0.025	0.04%	
Kuwait Resorts	0.084	0.004	4.50%	0.52	11.27	3.68	16	9.3%	-17.1%	0.37	4.39	4.8%	4.2%	0.106	0.067	0.04%	
Future Kid Entertainment and Real Estate	0.125	0.000	0.00%	1.08	10.94	0.00	14	7.8%	58.8%	0.01	0.05	10.4%	4.7%	0.130	0.074	0.03%	
Al Eid Food	0.243	-0.001	-0.41%	1.92	14.83	2.80	41	1.7%	5.7%	0.20	0.80	13.4%	10.2%	0.304	0.207	0.09%	
Kuwait Hotels	0.170	0.000	0.00%	2.04	21.12	2.94	10	4.3%	142.9%	0.00	0.00	9.9%	6.4%	0.201	0.070	0.02%	
Palms Agro Production	0.078	0.000	0.00%	0.79	NM	0.00	4	0.0%	14.4%	0.00	0.00	-13.8%	-10.9%	0.083	0.043	0.01%	
ALI ALGanim	0.844	0.004	0.48%	4.21	12.09	5.66	231	6.2%	nm	1.02	1.22	30.5%	12.1%	0.966	0.750	0.51%	
Total Consumer Services - 13 Companies							981			2.40	21.48					2.16%	

DAILY MARKET COVERAGE REPORT

NIC MENA SECURITIES - RESEARCH AND STUDIES DEP



Financial Services Company	Price			Valuation Multiples			MKT Cap	Price Performance		Trading Indicators		ROE	ROA	52 Week (KD)		MKT Cap
	Close (KD)	Day Δ	Day % Δ	PBV(X)	PE(X)	DY%	Mn KD	MTD(%)	YTD (%)	Value (Mn KD)	(Mn Shrs)	(%)	(%)	High	Low	%
Egypt Kuwait Holding	0.374	0.001	0.27%	2.13	5.77	5.73	421	-2.3%	-12.0%	0.04	0.10	37.1%	17.5%	0.465	0.353	0.93%
Kuwait Projects Company Holding	0.128	0.002	1.59%	0.67	323.08	3.97	313	8.5%	-11.3%	0.45	3.49	0.2%	0.1%	0.215	0.112	0.69%
National Industries Group Holding	0.249	0.012	5.06%	1.05	11.94	4.69	536	6.4%	-1.6%	5.18	20.93	5.3%	2.9%	0.314	0.207	1.18%
Boursa Kuwait Securities Co	2.370	-0.003	-0.13%	7.61	24.69	2.74	476	4.3%	17.5%	0.32	0.13	32.4%	22.9%	2.870	1.800	1.05%
GFH Financial Group	0.082	0.001	1.36%	0.92	9.81	4.48	286	5.5%	-17.5%	2.93	35.64	9.4%	1.2%	0.109	0.073	0.63%
National Investments	0.277	0.000	0.00%	1.10	10.36	16.25	221	15.9%	26.5%	0.60	2.16	5.4%	4.4%	0.475	0.201	0.49%
Tamdeen Investment	0.625	0.000	0.00%	0.72	16.16	1.60	213	13.6%	64.9%	0.00	0.00	4.9%	3.8%	0.625	0.309	0.47%
Alimtiq Investment Group	0.085	0.001	0.83%	0.50	NM	10.73	87	13.4%	-28.9%	0.71	8.43	-0.9%	-0.4%	0.138	0.069	0.19%
Commercial Facilities	0.179	0.001	0.56%	0.57	8.79	8.43	91	1.7%	-13.6%	0.01	0.06	6.5%	3.6%	0.228	0.165	0.20%
Aayan Leasing and Investment	0.143	0.005	3.62%	1.02	13.07	0.00	95	11.7%	-16.6%	5.31	36.97	8.2%	6.0%	0.204	0.104	0.21%
Kuwait Investment	0.140	0.004	2.94%	0.67	28.33	18.38	77	6.1%	-51.6%	0.41	2.90	2.2%	2.1%	0.304	0.113	0.17%
Noor Financial Investment	0.199	0.006	3.11%	1.21	5.45	2.49	101	10.6%	-24.1%	0.09	0.43	22.0%	16.2%	0.303	0.163	0.22%
Arzan Financial Group for Financing and Investmei	0.129	0.001	0.78%	0.89	9.42	1.89	104	-2.3%	-17.7%	0.92	7.09	9.4%	7.0%	0.180	0.109	0.23%
Kuwait Financial Centre	0.117	0.000	0.00%	0.57	8.85	8.14	59	9.3%	-32.1%	0.14	1.18	6.9%	4.0%	0.191	0.101	0.13%
Gulf Investment House	0.403	-0.002	-0.49%	3.86	1,620.00	0.00	164	1.0%	35.0%	0.12	0.30	0.2%	0.6%	0.422	0.217	0.36%
Arabi Group Holdings	0.303	0.003	1.00%	1.79	NM	0.00	50	5.6%	3.1%	0.31	0.99	-29.0%	-4.0%	0.499	0.169	0.11%
Kuwait and Middle East Financial Investment	0.095	0.002	1.82%	0.81	10.86	7.50	21	-28.6%	-37.8%	0.02	0.22	7.5%	5.2%	0.175	0.091	0.05%
Privatization Holding	0.039	0.001	2.36%	0.32	NM	0.00	24	5.7%	-30.5%	0.05	1.19	-7.1%	-5.5%	0.067	0.032	0.05%
Asiya Capital Investments	0.058	0.001	2.31%	0.51	3.56	0.00	45	29.2%	8.1%	2.52	41.61	15.5%	15.2%	0.071	0.037	0.10%
Umm Al Qaiwain General Investment Co	0.096	-0.001	-0.72%	0.54	5.84	5.16	35	2.4%	11.2%	0.00	0.00	9.8%	8.1%	0.108	0.086	0.08%
Securities House	0.068	0.004	6.92%	0.65	11.71	0.00	29	15.1%	-35.6%	0.27	4.07	5.5%	4.7%	0.111	0.052	0.06%
Kamco Investment	0.104	0.002	1.96%	0.57	5.89	9.80	36	5.1%	-20.9%	0.18	1.75	9.8%	4.6%	0.167	0.089	0.08%
First Investment	0.086	0.002	2.02%	0.76	95.80	0.00	38	15.0%	0.1%	0.46	5.40	0.8%	0.8%	0.104	0.068	0.08%
Inovest BSC Public	0.094	0.006	7.18%	0.00	NM	0.00	28	21.7%	-25.6%	0.41	4.35	2.9%	1.8%	0.189	0.070	0.06%
Coast Investment and Development	0.084	0.006	7.14%	0.81	24.58	6.38	39	9.1%	-25.3%	0.06	0.68	3.2%	3.1%	0.126	0.066	0.09%
Al Madar Investment	0.090	-0.007	-6.80%	0.92	56.73	0.00	19	-7.8%	-18.5%	0.00	0.02	1.6%	1.7%	0.123	0.083	0.04%
Bayan Investment	0.041	0.000	0.00%	0.31	NM	0.00	13	0.1%	-28.7%	0.00	0.00	-2.4%	-1.5%	0.071	0.036	0.03%
Al Manar Financing and Leasing	0.061	0.002	3.21%	0.58	19.25	0.00	16	0.8%	-5.2%	0.00	0.03	2.9%	2.3%	0.079	0.049	0.04%
Manazel Holding	0.030	0.001	2.03%	0.64	10.10	0.00	13	10.3%	-42.4%	0.09	2.96	6.2%	2.0%	0.060	0.025	0.03%
Kuwait Finance and Investment	0.062	0.000	-0.65%	0.46	26.96	0.00	19	-2.2%	-28.6%	0.00	0.02	1.7%	1.6%	0.097	0.055	0.04%
National International Holding	0.109	0.004	3.81%	0.64	14.42	4.62	24	-0.9%	-28.8%	0.10	0.89	4.1%	2.8%	0.167	0.091	0.05%
Osoul Investment	0.091	0.000	-0.22%	0.83	NM	11.67	11	1.7%	11.0%	0.00	0.00	-4.4%	-4.0%	0.118	0.062	0.03%
UniCap Investment and Finance	0.056	0.002	3.68%	0.60	63.88	0.00	13	1.4%	-20.7%	0.00	0.07	1.9%	0.2%	0.086	0.050	0.03%
Amar Finance and Leasing	0.063	0.000	0.00%	0.58	3.42	0.00	12	0.0%	-3.8%	0.00	0.00	18.6%	17.3%	0.082	0.058	0.03%
Gulf North Africa Holding	0.162	0.003	1.89%	1.72	59.40	0.00	20	9.5%	84.7%	0.15	0.89	3.0%	2.4%	0.141	0.057	0.04%
International Financial Advisors	0.094	0.002	2.19%	0.59	36.75	0.00	23	7.5%	-19.0%	0.18	1.94	1.9%	0.7%	0.127	0.082	0.05%
Credit Rating and Collection	0.015	0.000	0.00%	0.54	NM	0.00	3	-3.7%	-61.7%	0.00	0.00	-0.5%	-0.4%	0.069	0.014	0.01%
Ekttitab Holding	0.012	0.000	3.57%	0.36	NM	0.00	4	8.4%	-47.4%	0.05	4.32	-16.8%	-12.9%	0.022	0.009	0.01%
Kuwait Syrian Holding Co	0.037	0.001	2.50%	0.35	5.81	0.00	7	8.5%	-15.9%	0.01	0.18	8.7%	6.2%	0.059	0.026	0.01%
Warba Capital Holding	0.083	0.000	0.00%	0.92	NM	0.00	8	-2.7%	-3.5%	0.00	0.00	-0.8%	-0.7%	0.119	0.070	0.02%
National Consumer Holding	0.122	0.003	2.52%	5.39	NM	0.00	37	9.9%	-0.8%	1.55	12.53	-8.0%	-7.5%	0.158	0.097	0.08%
Al Deera Holding	0.170	0.007	4.29%	1.09	8.21	0.00	16	1.8%	-18.5%	0.00	0.01	12.5%	6.5%	0.200	0.145	0.03%
AL Safat Investment	0.121	0.004	3.42%	1.49	NM	0.00	34	23.0%	-4.0%	1.62	13.17	-1.8%	-1.6%	0.270	0.091	0.08%
Gulf Franchising Holding	0.095	0.000	-0.21%	1.20	3.57	0.00	4	15.6%	-0.9%	0.00	0.00	40.5%	13.1%	0.148	0.063	0.01%
Total Financial Services - 44 Companies							3,881			25.24	217.09					8.56%

DAILY MARKET COVERAGE REPORT

NIC MENA SECURITIES - RESEARCH AND STUDIES DEP



Health Care	Price			Valuation Multiples			MKT Cap	Price Performance		Trading Indicators		ROE	ROA	52 Week (KD)		MKT Cap
	Company	Close (KD)	Day Δ	Day % Δ	PBV(X)	PE(X)		DY%	Mn KD	MTD(%)	YTD (%)			Value (Mn KD)	(Mn Shrs)	
Al-Maidan Clinic for Oral Health Services	0.694	0.000	0.00%	2.75	15.27	0.00	156	-0.1%	-49.6%	0.00	0.00	19.4%	12.5%	1.400	0.556	0.34%
Advanced Technology	0.409	-0.090	-18.04%	1.11	10.78	3.01	61	-18.0%	-3.7%	0.00	0.00	10.7%	2.1%	0.595	0.450	0.14%
Yiaco Medical	0.450	0.000	0.00%	43.51	NM	0.00	8	0.0%	2.7%	0.00	0.00	-161.7%	-4.7%	0.480	0.399	0.02%
Total Health Care - 3 Companies							225			0.00	0.00					0.50%

Industrials	Price			Valuation Multiples			MKT Cap	Price Performance		Trading Indicators		ROE	ROA	52 Week (KD)		MKT Cap
	Company	Close (KD)	Day Δ	Day % Δ	PBV(X)	PE(X)		DY%	Mn KD	MTD(%)	YTD (%)			Value (Mn KD)	(Mn Shrs)	
Agility Public Warehousing	0.808	0.005	0.62%	1.37	61.67	2.08	2,041	3.1%	2.0%	4.52	5.57	2.7%	2.2%	1.062	0.634	4.50%
Human Soft Holding	3.416	-0.006	-0.18%	3.44	7.21	11.69	416	1.6%	6.1%	0.39	0.12	49.6%	34.9%	3.704	3.006	0.92%
Alafco Aviation Lease and Finance	0.171	0.003	1.79%	0.62	NM	0.00	163	1.8%	-22.9%	1.26	7.36	-15.9%	-3.4%	0.256	0.162	0.36%
Kuwait Cement	0.233	0.002	0.87%	0.85	163.83	2.16	166	10.4%	0.0%	0.08	0.35	0.5%	0.3%	0.295	0.194	0.37%
Gulf Cable and Electrical Industries	1.312	0.038	2.98%	1.18	11.81	4.71	273	8.9%	46.3%	0.52	0.40	11.0%	9.0%	1.850	0.860	0.60%
Integrated Holding	0.370	0.015	4.23%	1.47	27.14	2.82	94	13.5%	-4.1%	0.98	2.69	5.4%	3.4%	0.478	0.321	0.21%
Kuwait Portland Cement	0.825	0.012	1.48%	1.14	17.01	8.61	83	-1.2%	-17.0%	0.03	0.03	6.8%	5.3%	1.240	0.751	0.18%
Educational Holding Group	2.390	0.000	0.00%	4.06	9.08	22.30	50	-2.4%	-40.3%	0.01	0.00	30.0%	17.2%	4.431	2.300	0.11%
United Projects for Aviation Services	0.200	-0.018	-8.26%	0.79	47.08	0.00	76	-2.0%	-12.1%	0.00	0.00	1.7%	1.0%	0.318	0.182	0.17%
Heavy Engineering Industries and Shipbuilding	0.697	0.032	4.81%	1.78	21.97	3.01	126	11.5%	30.6%	0.34	0.49	8.2%	3.2%	0.960	0.442	0.28%
National Industries	0.199	0.000	0.00%	0.82	12.55	5.03	70	4.2%	3.1%	0.00	0.00	6.5%	4.7%	0.260	0.181	0.15%
ACICO Industries	0.095	0.006	6.15%	0.40	NM	0.00	31	4.7%	-35.6%	0.10	1.07	-1.9%	-0.5%	0.208	0.076	0.07%
Kuwait Company for Process Plant Construction a	0.299	-0.007	-2.29%	1.23	19.83	8.09	35	-2.6%	-35.5%	0.06	0.18	6.9%	4.1%	0.521	0.286	0.08%
Ras Al Khaimah for White Cement and Constructi	0.143	0.000	0.00%	1.23	33.70	5.80	72	2.1%	13.5%	0.00	0.00	3.6%	3.0%	0.175	0.113	0.16%
Combined Group Contracting	0.403	-0.006	-1.47%	1.52	6.27	6.11	69	-1.7%	15.5%	0.27	0.67	26.3%	5.8%	0.500	0.308	0.15%
Kuwait and Gulf Link Transport	0.060	0.001	2.22%	0.35	3.16	0.00	16	4.2%	-14.1%	0.01	0.21	11.6%	2.6%	0.089	0.054	0.04%
Shuaiba Industrial	0.155	0.003	1.97%	0.84	12.65	7.89	15	4.0%	-32.4%	0.01	0.05	6.6%	5.4%	0.310	0.137	0.03%
National Cleaning	0.038	0.001	3.57%	0.29	NM	0.00	9	0.5%	-36.0%	0.01	0.34	-13.9%	-4.1%	0.072	0.031	0.02%
Fujairah Cement Industries	0.038	0.000	0.00%	0.19	NM	0.00	13	-2.1%	-30.4%	0.00	0.00	-12.7%	-6.3%	0.062	0.028	0.03%
Mubarrad Holding	0.085	0.003	3.68%	0.63	8.61	6.13	14	5.6%	-25.9%	0.08	0.90	7.3%	6.5%	0.125	0.071	0.03%
Specialities Group Holding	0.108	0.001	0.93%	0.57	11.63	6.35	17	17.5%	-13.9%	0.39	3.59	5.0%	3.6%	0.152	0.076	0.04%
Salbookh Trading	0.016	-0.001	-5.78%	0.52	NM	0.00	2	-11.9%	-60.1%	0.01	0.47	-51.7%	-28.6%	0.059	0.016	0.00%
Metal and Recycling	0.097	0.000	0.00%	1.25	NM	0.00	9	7.4%	2.0%	0.00	0.00	-12.0%	-2.0%	0.114	0.060	0.02%
Equipment Holding	0.042	0.002	4.00%	0.64	NM	0.00	3	30.0%	-26.6%	0.00	0.03	-11.1%	-3.2%	0.075	0.030	0.01%
Jassim Transport & Stevedoring	0.333	0.004	1.22%	1.11	14.35	4.86	50	1.2%	-19.2%	0.01	0.12	8.0%	6.3%	0.410	0.300	0.11%
Total Industrials - 24 Companies							3,912			9.09	24.65					8.63%

DAILY MARKET COVERAGE REPORT

NIC MENA SECURITIES - RESEARCH AND STUDIES DEP



Insurance	Price			Valuation Multiples			MKT Cap	Price Performance		Trading Indicators		ROE	ROA	52 Week (KD)		MKT Cap
	Company	Close (KD)	Day Δ	Day % Δ	PBV(X)	PE(X)		DY%	Mn KD	MTD(%)	YTD (%)			Value (Mn KD)	(Mn Shrs)	
Gulf Insurance Group	0.970	0.000	0.00%	1.13	4.16	10.93	275	-1.5%	-9.3%	0.00	0.00	28.6%	5.5%	1.200	0.943	0.61%
Al Ahleia Insurance	0.500	0.000	0.00%	0.83	6.90	7.00	108	-1.8%	-1.0%	0.00	0.00	12.5%	4.4%	0.612	0.453	0.24%
Kuwait Insurance	0.491	-0.019	-3.73%	0.77	7.91	6.47	91	-0.6%	31.8%	0.00	0.01	10.4%	6.1%	0.533	0.379	0.20%
Kuwait Reinsurance	0.259	0.000	0.00%	0.94	9.15	1.77	62	-9.4%	2.7%	0.00	0.00	10.8%	3.4%	0.373	0.217	0.14%
Bahrain Kuwait Insurance	0.191	0.000	0.00%	1.33	11.98	8.44	29	0.0%	0.0%	0.00	0.00	11.0%	2.1%	0.191	0.191	0.06%
Warba Insurance and Reinsurance	0.120	0.000	0.00%	0.55	12.37	8.33	20	-4.8%	-24.5%	0.01	0.10	4.3%	1.5%	0.165	0.119	0.04%
First Takaful Insurance	0.046	0.000	0.00%	0.60	284.38	0.00	5	0.0%	-9.0%	0.00	0.00	0.2%	0.1%	0.071	0.034	0.01%
Wethaq Takaful Insurance	0.037	0.000	0.00%	0.99	21.64	0.00	4	0.0%	-27.3%	0.00	0.00	2.3%	2.3%	0.073	0.024	0.01%
Total Insurance - 8 Companies							594			0.02	0.11					1.31%

Energy	Price			Valuation Multipels			MKT Cap	Price Performance		Trading Indicators		ROE	ROA	52 Week (KD)		MKT Cap
	Company	Close (KD)	Day Δ	Day % Δ	PBV(X)	PE(X)		DY%	Mn KD	MTD(%)	YTD (%)			Value (Mn KD)	(Mn Shrs)	
National Petroleum Services	0.710	0.014	2.01%	1.76	12.48	5.03	69	1.9%	-15.1%	0.01	0.01	14.5%	11.6%	0.868	0.625	0.15%
Independent Petroleum Group	0.488	0.002	0.41%	0.85	12.27	6.17	88	13.5%	-17.3%	0.03	0.05	7.1%	1.5%	0.612	0.368	0.19%
Burgan for Well Drilling Trading and Maintenance	0.122	0.004	3.39%	0.43	9.90	2.31	32	6.1%	-11.7%	0.04	0.37	4.4%	1.4%	0.161	0.094	0.07%
Energy House Holding	0.021	-0.001	-5.41%	0.80	NM	0.00	16	-3.2%	-64.8%	0.01	0.38	-1.4%	-2.5%	0.084	0.019	0.03%
Gulf Petroleum Investment	0.017	0.001	5.63%	0.23	NM	0.00	8	5.6%	-34.7%	0.04	2.63	-4.0%	-2.6%	0.029	0.013	0.02%
Senergy Holding	0.040	0.002	4.75%	0.76	45.12	0.00	8	2.1%	-22.7%	0.01	0.35	1.7%	1.4%	0.060	0.035	0.02%
Total Energy - 6 Companies							220			0.14	3.80					0.49%

DAILY MARKET COVERAGE REPORT

NIC MENA SECURITIES - RESEARCH AND STUDIES DEP



Real Estate	Price		Valuation Multiples					MKT Cap	Performance		Trading Indicators		ROE	ROA	2 Week (KD)		MKT Cap
Company	Close (KD)	Day Δ	Day % Δ	PBV(X)	PE(X)	DY%	Mn KD	MTD(%)	YTD (%)	Value (Mn KD)	(Mn Shrs)	(%)	(%)	High	Low	%	
Mabane Co.	0.901	0.003	0.33%	1.98	18.58	1.47	1,119	3.3%	20.0%	0.24	0.27	11.1%	5.5%	0.910	0.717	2.47%	
Salhia Real Estate	0.508	0.008	1.60%	1.60	16.46	2.86	262	9.0%	-0.8%	0.72	1.42	9.9%	4.0%	0.563	0.428	0.58%	
Commercial Real Estate	0.100	0.001	1.21%	0.60	10.15	5.06	176	0.5%	-21.0%	0.74	7.39	6.2%	3.3%	0.140	0.094	0.39%	
National Real Estate	0.144	0.003	2.13%	0.79	1.27	0.00	268	2.9%	-23.4%	0.56	3.90	64.5%	38.6%	0.212	0.125	0.59%	
Tamdeen Real Estate	0.390	0.010	2.63%	0.74	8.75	2.63	157	5.4%	12.1%	0.05	0.14	9.2%	3.9%	0.380	0.296	0.35%	
Kuwait Real Estate	0.112	0.004	3.70%	0.79	15.79	2.70	104	1.8%	-37.9%	3.94	35.48	4.9%	1.9%	0.187	0.097	0.23%	
United Real Estate	0.075	-0.002	-2.49%	0.47	110.72	0.00	80	4.2%	1.3%	0.06	0.74	0.4%	-0.1%	0.121	0.064	0.18%	
First Dubai for Real Estate Development	0.056	0.002	3.11%	0.52	25.32	0.00	41	13.0%	-48.0%	0.07	1.19	2.1%	1.7%	0.115	0.044	0.09%	
Al Mazaya Holding	0.052	0.001	2.36%	0.51	38.20	0.00	33	5.1%	-33.6%	0.43	8.24	1.3%	0.7%	0.084	0.043	0.07%	
Ajial Real Estate Entertainment	0.285	0.000	0.00%	0.42	18.76	1.75	55	4.4%	-6.3%	0.00	0.00	2.2%	1.8%	0.344	0.268	0.12%	
Injazzat Real Estate Development	0.080	-0.001	-1.11%	0.48	6.46	6.18	27	3.5%	-19.1%	0.01	0.11	7.5%	3.9%	0.114	0.070	0.06%	
Munshaat Real Estate Projects	0.063	-0.001	-2.03%	1.92	5.30	0.00	20	4.5%	-10.5%	0.00	0.02	42.9%	4.5%	0.076	0.052	0.04%	
Aayan Real Estate	0.073	0.003	4.43%	0.49	22.80	0.00	30	9.1%	-20.9%	0.09	1.19	2.2%	2.3%	0.102	0.056	0.07%	
Al Argan International Real Estate	0.097	0.001	1.04%	0.32	35.16	0.00	25	10.9%	-17.9%	0.00	0.04	0.9%	0.3%	0.144	0.073	0.05%	
Al-Enmaa Real Estate	0.062	0.003	5.58%	0.65	NM	0.00	28	5.4%	-20.7%	0.02	0.31	-5.9%	NM	0.088	0.050	0.06%	
Arkan Al Kuwait Real Estate	0.124	0.000	0.00%	0.87	12.09	4.84	31	0.0%	0.0%	0.00	0.00	7.4%	2.3%	0.149	0.113	0.07%	
Kuwait Business Town Real Estate	0.062	0.002	2.48%	0.75	16.82	0.00	36	5.6%	-25.8%	0.14	2.22	3.8%	2.8%	0.093	0.046	0.08%	
Dalqan Real Estate	0.219	0.004	1.86%	1.93	199.07	0.00	13	5.8%	-0.9%	0.04	0.17	1.0%	1.0%	0.261	0.195	0.03%	
Sokouk Holding	0.026	0.001	2.37%	0.58	15.71	0.00	15	4.9%	-22.4%	0.02	0.72	3.8%	1.7%	0.036	0.020	0.03%	
Tijara and Realestate Investment	0.058	0.002	2.86%	0.50	8.50	5.37	21	6.5%	-8.5%	0.14	2.50	6.0%	3.3%	0.089	0.044	0.05%	
Al-Arabiya Real Estate	0.030	0.001	3.45%	0.35	NM	0.00	15	2.7%	-30.8%	0.32	10.69	-23.1%	-7.3%	0.049	0.026	0.03%	
Aqar Real Estate Investments	0.058	0.000	0.69%	0.48	18.53	5.75	14	4.5%	-26.4%	0.02	0.29	2.6%	2.1%	0.090	0.052	0.03%	
Mashaer Holding	0.059	0.005	8.26%	0.65	NM	0.00	10	7.7%	-22.0%	0.00	0.01	-6.5%	-3.2%	0.082	0.049	0.02%	
Dar Al Thuraya Real Estate	0.170	0.000	0.00%	1.47	25.07	0.00	25	0.0%	61.9%	0.00	0.00	6.0%	5.3%	0.172	0.092	0.05%	
Osos Holding Group	0.102	0.000	0.00%	0.90	8.89	9.80	11	-7.3%	-2.9%	0.00	0.00	10.2%	6.5%	0.147	0.094	0.02%	
Al Massaleh Real Estate	0.037	0.000	-0.27%	0.62	NM	0.00	9	6.9%	-28.0%	0.00	0.00	-15.4%	-3.2%	0.057	0.030	0.02%	
Kuwait Remal Real Estate	0.010	0.001	14.46%	1.06	NM	0.00	3	18.8%	-56.5%	0.02	2.41	-110.3%	-12.4%	0.024	0.007	0.01%	
Kuwait Real Estate Holding	0.034	0.003	8.68%	0.58	11.27	0.00	6	-0.6%	-41.1%	0.01	0.23	5.1%	1.7%	0.057	0.031	0.01%	
Taameer Real Estate Investment	0.026	0.000	1.57%	0.41	NM	0.00	6	8.8%	-38.3%	0.05	1.82	-6.5%	-4.9%	0.054	0.018	0.01%	
Sanam Real Estate	0.062	0.001	1.64%	0.81	68.54	0.00	8	-4.3%	-22.7%	0.00	0.01	1.2%	1.0%	0.100	0.053	0.02%	
Mena Real Estate	0.029	-0.001	-3.30%	0.27	NM	0.00	4	1.4%	-39.4%	0.03	1.01	-6.8%	-5.4%	0.093	0.028	0.01%	
Al Masaken International Real Estate Developmen	0.026	-0.001	-1.86%	0.43	NM	0.00	3	-7.4%	-38.7%	0.00	0.08	-1.1%	-0.4%	0.057	0.026	0.01%	
Real Estate Trade Centers	0.061	0.003	5.86%	0.32	24.27	0.00	9	19.7%	-17.1%	0.05	0.87	1.3%	1.1%	0.120	0.043	0.02%	
Land United Real Estate	0.068	0.000	0.00%	0.60	NM	0.00	10	0.0%	-27.6%	0.00	0.00	-4.8%	-1.5%	0.118	0.052	0.02%	
Total Real Estate - 34 Companies							2,671			7.76	83.48					5.89%	

DAILY MARKET COVERAGE REPORT

NIC MENA SECURITIES - RESEARCH AND STUDIES DEP



Technology	Price			Valuation Multiples			MKT Cap	Price Performance		Trading Indicators		ROE	ROA	52 Week (KD)		MKT Cap
	Close (KD)	Day Δ	Day % Δ	PBV(X)	PE(X)	DY%	Mn KD	MTD(%)	YTD (%)	Value (Mn KD)	(Mn Shrs)	(%)	(%)	High	Low	%
Automated Systems	0.091	0.001	1.22%	0.80	NM	0.00	9	8.5%	-4.5%	0.00	0.04	-3.2%	-2.8%	0.110	0.074	0.02%
Total Technology - 1 Companies				0.80	NM	0.0%	9			0.00	0.04	-3.21%	-2.82%			0.02%

Telecom	Price			Valuation Multiples			MKT Cap	Price Performance		Trading Indicators		ROE	ROA	52 Week (KD)		MKT Cap
	Close (KD)	Day Δ	Day % Δ	PBV(X)	PE(X)	DY%	Mn KD	MTD(%)	YTD (%)	Value (Mn KD)	(Mn Shrs)	(%)	(%)	High	Low	%
Mobile Telecommunications	0.608	0.002	0.33%	2.18	13.94	5.45	2,631	1.5%	1.8%	2.26	3.71	15.7%	4.3%	0.698	0.564	5.80%
Kuwait Telecommunications	0.586	-0.002	-0.34%	2.54	12.95	5.10	585	-0.7%	37.5%	0.52	0.89	20.3%	11.1%	1.189	0.418	1.29%
National Mobile Telecommunications	1.072	0.039	3.78%	0.97	13.41	3.39	537	4.6%	65.5%	0.07	0.07	7.2%	4.2%	1.280	0.615	1.19%
AAN Digital Services	0.016	0.000	0.00%	0.60	NM	0.00	14	0.0%	-2.4%	0.00	0.00	NM	NM	0.020	0.016	0.03%
Hayat Communications	0.058	0.003	4.50%	0.44	NM	0.00	5	-1.7%	-47.6%	0.01	0.15	-0.7%	-0.3%	0.123	0.050	0.01%
Telecom - 5 Companies							3,772			2.86	4.81					8.32%

Utilities	Price			Valuation Multiples			MKT Cap	Price Performance		Trading Indicators		ROE	ROA	52 Week (KD)		MKT Cap
	Close (KD)	Day Δ	Day % Δ	PBV(X)	PE(X)	DY%	Mn KD	MTD(%)	YTD (%)	Value (Mn KD)	(Mn Shrs)	(%)	(%)	High	Low	%
Shamal Az-Zour Al-Oula Power & Water	0.198	0.003	1.54%	1.81	16.04	9.23	218	2.6%	-14.5%	0.20	1.01	14.8%	2.7%	0.246	0.188	0.48%
Total Utilities - 1 Companies							218			0.20	1.01					0.48%

Total Market 156 Companies				1.99	36.42	3.95	45,332			84.51	416.56					100%
-----------------------------------	--	--	--	-------------	--------------	-------------	---------------	--	--	--------------	---------------	--	--	--	--	-------------

End of Report

The information contained in this document is proprietary to NIC and is for use only by the persons to whom it is issued. This document is confidential and may not be distributed either in part or in whole without the express agreement of NIC. It is intended solely for the use of the individual or entity to whom it is addressed and others authorized to receive it.

Note : ROE and ROA is calculated based on LFY net profit & shareholders' equity and LFY Operating Profits & Total Assets

Sources : National Investments Company Research and Studies Departments, Boursa, Refinitiv.



شركة الاستثمار الوطنية
NATIONAL INVESTMENTS COMPANY

Sharq, Al Mutanabi Street, Khaleejia Tower | P.O. Box 25667, Safat 13117, Kuwait

T.: +965 2226 6666 | Fax: +965 2226 6793 | www.nic.com.kw